

Work Place Sentence Frames

GRADE 1 • UNIT 4

Make 3 copies of this set on heavy paper or card stock to include in your Work Place bins.

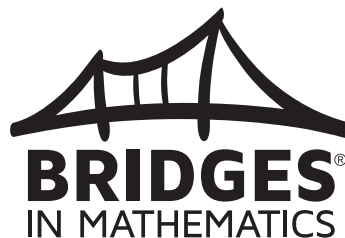
Each set of sentence frames is marked with the Work Place for which it is intended.

A star (★) indicates a set more suited for advanced students or those who have visited the Work Place before.

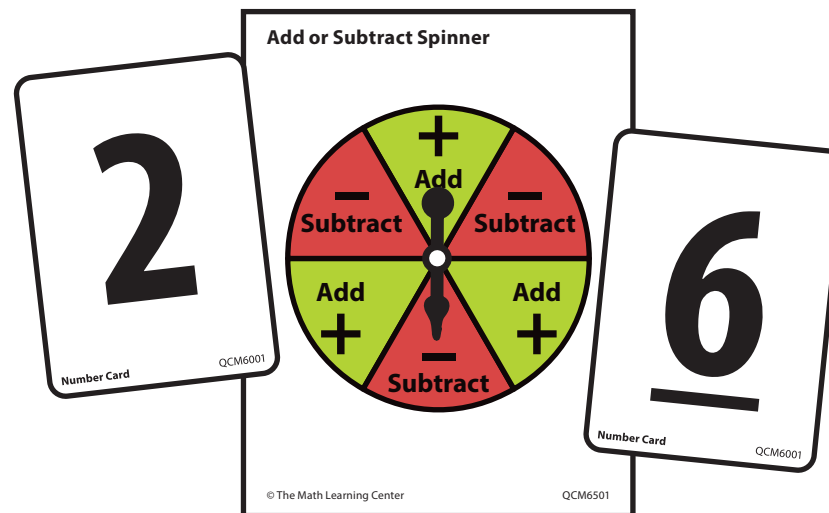
Many of the blanks are intended to be filled in with a number. Others will be filled in with words or phrases. More complex sentences have prompts below the blanks to indicate what should be filled in (as with Mad Libs).

When the sentence frame requires new or challenging vocabulary, a word bank is offered.

Certain key mathematics vocabulary is indicated in bold type.



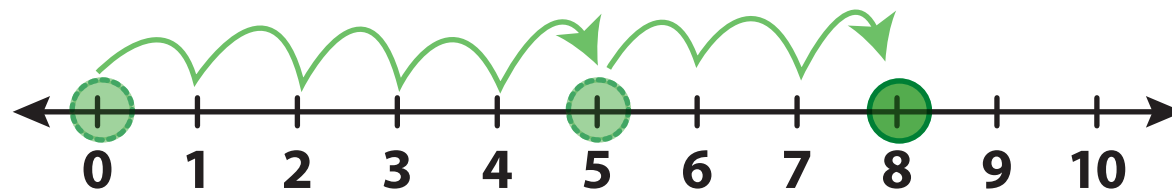
I got a _____ and a _____. The spinner
number number
says to _____. I jump _____
add/subtract forward/backward
_____ spaces for my larger number. Then
number
I jump _____ spaces for my
forward/backward number
smaller number. I landed on _____.
number



Here is my story: _____

We are playing for points. I landed on _____ and you landed on _____. That is a difference of _____. My number was _____ your number so _____ win!

number number number less than/greater than you/I



I spun _____ and _____. The middle
number number
spinner says to _____. I jump to my
add/subtract
larger number _____. Then I jump _____
number number
spaces _____ for my smaller number.
forward/backward
I count by tens and land on _____.
number

$$\begin{array}{c} \text{_____} \\ \text{number} \end{array} + \begin{array}{c} \text{_____} \\ \text{number} \end{array} = \begin{array}{c} \text{_____} \\ \text{number} \end{array}$$

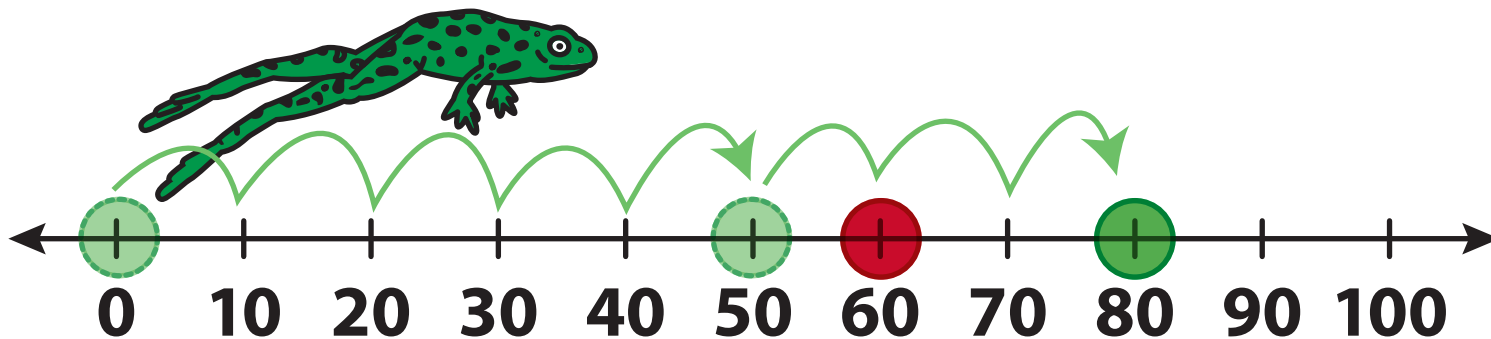
Or

$$\begin{array}{c} \text{_____} \\ \text{number} \end{array} - \begin{array}{c} \text{_____} \\ \text{number} \end{array} = \begin{array}{c} \text{_____} \\ \text{number} \end{array}.$$

Here is my story: _____

I landed on _____. You landed on _____.
number number

My number is _____, so _____ win!
higher/lower you/I



I got _____ and _____. The spinner says
number number
to _____. My larger number is _____,
add/subtract number
so it has to be first.

$$\underline{\hspace{2cm}} + \underline{\hspace{2cm}} = \underline{\hspace{2cm}}$$

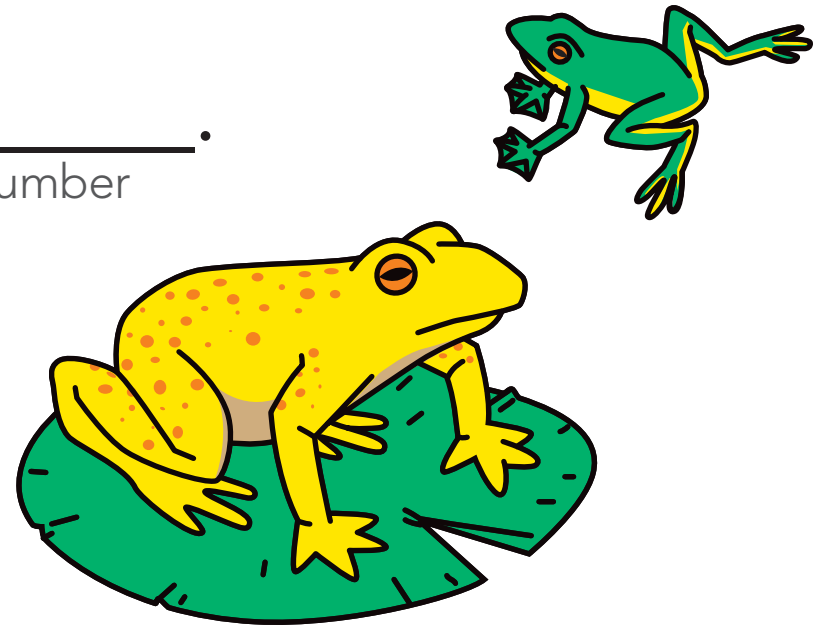
number number number

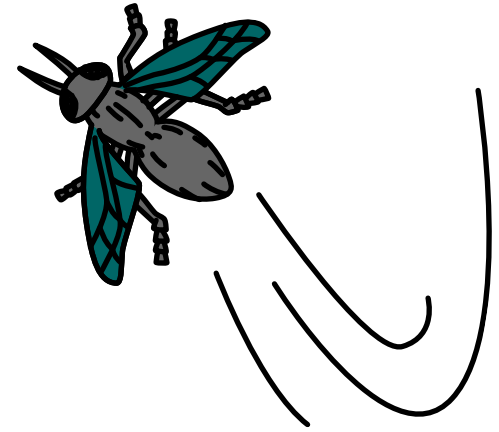
Or

$$\underline{\hspace{2cm}} - \underline{\hspace{2cm}} = \underline{\hspace{2cm}}.$$

number number number

I need to move _____
number
places on the board.





My first number is _____.
number

Double that is _____.
number

My equation is _____ + _____ = _____.
number number number

Or _____ - _____ = _____.
number number number

I need to move _____ spaces on the board.
number

I got a _____ on the spinner
number
and a _____ on the dice.
number

$$\begin{array}{c} \text{_____} \\ \text{number} \end{array} + \begin{array}{c} \text{_____} \\ \text{number} \end{array} = \begin{array}{c} \text{_____} \\ \text{number} \end{array}$$



I will write _____ on the lily pad.
number

I am at _____ and my number is
number
_____. I spun a _____. If I take the
number
hop I will be _____ hops _____
number ahead of/behind
my magic lily pad. If I don't take the
hop I need to spin a _____ on my next
number
turn to get to my magic lily pad.